

FORGED FITTINGS

FORGED FITTINGS

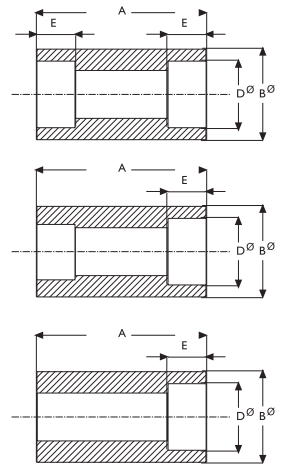
MANGUITO SW 3000LBS A105

MANGUITO Y MEDIO MANGUITO SW A105		Rating: 3000LBS
Especificaciones		
Material	Acero carbono ASTM A105	
Normativa	NACE MR 0175	



MANGUITO A105 3000LBS / 6000LBS SW

DN	3000LBS					6000LBS				
	A	B Ø	D Ø	E	Peso aprox.	A	B Ø	D Ø	E	Peso aprox.
1/4"	25,5	22,0	14,0	9,5	0,050					
3/8"	28,5	25,5	17,5	11,0	0,060					
1/2"	35,0	31,5	21,7	12,5	0,130	35,0	38,0	21,7	12,5	0,23
3/4"	38,0	38,0	27,1	14,5	0,190	38,0	44,5	27,1	14,5	0,32
1"	44,5	44,5	33,8	16,0	0,260	44,5	57,0	33,8	16,0	0,64
1.1/4"	47,5	57,0	42,6	17,5	0,480	47,5	63,5	42,6	17,5	0,72
1.1/2"	51,0	63,5	48,7	19,0	0,570	51,0	76,0	48,7	19,0	1,17
2"	63,5	76,0	61,1	22,0	0,920	63,5	92,0	61,1	22,0	2,08
2.1/2"	66,5	92,0	73,8	23,5	1,400	66,5	108,0	73,8	23,5	2,80
3"	70,0	108,0	89,8	25,5	1,800	70,0	127,0	89,8	25,5	3,23
4"	76,0	140,0	115,4	28,5	3,230	76,0	159,0	115,4	28,5	6,22



MEDIO MANGUITO A105 3000LBS / 6000LBS SW

DN	3000LBS					6000LBS				
	A	B Ø	D Ø	E	Peso aprox.	A	B Ø	D Ø	E	Peso aprox.
1/4"	25,5	22,0	14,0	9,5	0,050					
3/8"	28,5	25,5	17,5	11,0	0,060					
1/2"	35,0	31,5	21,7	12,5	0,130	35,0	38,0	21,7	12,5	0,23
3/4"	38,0	38,0	27,1	14,5	0,190	38,0	44,5	27,1	14,5	0,32
1"	44,5	44,5	33,8	16,0	0,260	44,5	57,0	33,8	16,0	0,64
1.1/4"	47,5	57,0	42,6	17,5	0,480	47,5	63,5	42,6	17,5	0,72
1.1/2"	51,0	63,5	48,7	19,0	0,570	51,0	76,0	48,7	19,0	1,17
2"	63,5	76,0	61,1	22,0	0,920	63,5	92,0	61,1	22,0	2,08
2.1/2"	66,5	92,0	73,8	23,5	1,400	66,5	108,0	73,8	23,5	2,80
3"	70,0	108,0	89,8	25,5	1,800	70,0	127,0	89,8	25,5	3,23
4"	76,0	140,0	115,4	28,5	3,230	76,0	159,0	115,4	28,5	6,22

FORGED FITTINGS

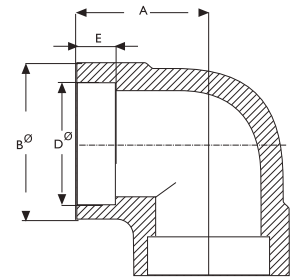
CODO 90° SW 3000LBS A105



CODO 90° SW		Rating: 3000LBS
Especificaciones		
Material	Acero carbono ASTM A105	
Normativa	NACE MR 0175	

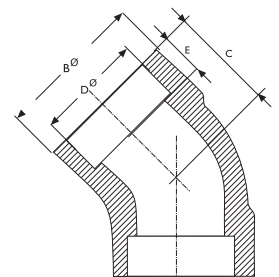
CODOS 90° 3000LBS / 6000LBS SW

DN	3000LBS					6000LBS				
	A	B Ø	D Ø	E	Peso aprox.	A	B Ø	D Ø	E	Peso aprox.
1/4"	24,5	25,5	14,0	9,5	0,050					
3/8"	24,5	25,5	17,5	11,0	0,060					
1/2"	28,5	33,5	21,7	12,5	0,130	35,0	38,0	21,7	12,5	0,230
3/4"	33,5	38,0	27,1	14,5	0,190	38,0	44,5	27,1	14,5	0,320
1"	38,0	46,0	33,8	16,0	0,260	44,5	57,0	33,8	16,0	0,640
1.1/4"	44,5	55,5	42,6	17,5	0,480	47,5	63,5	42,6	17,5	0,720
1.1/2"	51,0	62,0	48,7	19,0	0,570	51,0	76,0	48,7	19,0	1,170
2"	60,5	75,5	61,1	22,0	0,920	63,5	92,0	61,1	22,0	2,080
2.1/2"	76,0	92,0	73,8	23,5	1,400	66,5	108,0	73,8	23,5	2,800
3"	86,0	110,0	89,8	25,5	1,800	70,0	127,0	89,8	25,5	3,230
4"	114,5	152,5	115,4	28,5	3,230	76,0	159,0	115,4	28,5	6,220



CODOS 45° 3000LBS / 6000LBS SW

DN	3000LBS					6000LBS				
	A	B Ø	D Ø	E	Peso aprox.	A	B Ø	D Ø	E	Peso aprox.
1/4"	25,5	19,0	14,0	9,5	0,10					
3/8"	25,5	19,0	17,5	11,0	0,10					
1/2"	38,0	25,5	21,7	11,0	0,26	38,0	25,5	21,7	12,5	0,31
3/4"	38,0	25,5	27,1	12,5	0,25	46,0	28,5	27,1	14,5	0,52
1"	46,0	28,5	33,8	14,5	0,38	55,5	33,5	33,8	16,0	0,92
1.1/4"	55,5	33,5	42,6	16,0	0,61	62,0	35,0	42,6	14,5	1,02
1.1/2"	62,0	35,0	48,7	16,0	0,71	75,5	43,0	48,7	17,5	1,92
2"	75,5	43,0	61,1	17,5	1,14	84,0	43,5	61,1	15,0	2,29
2.1/2"	101,5	52,5	73,8	24,0	3,36	101,5	52,5	73,8	20,5	4,04
3"	118,0	63,5	89,8	32,0	4,70	118,0	63,5	89,8	28,5	5,80
4"	146,0	79,5	115,4	38,0	9,00	146,0	79,5	115,4	38,0	10,65



FORGED FITTINGS

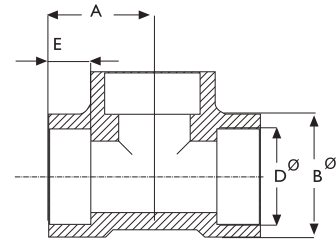
TES SW 3000LBS A105

TES SW A105		Rating: 3000LBS
Especificaciones		
Material	Acero carbono ASTM A105	
Normativa	NACE MR 0175	



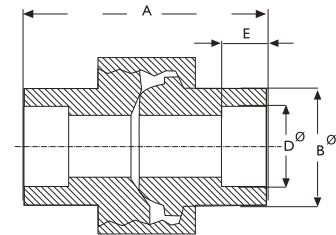
TES 3000LBS / 6000LBS SW

DN	3000LBS					6000LBS				
	A	B Ø	D Ø	E	Peso aprox.	A	B Ø	D Ø	E	Peso aprox.
1/4"	24,5	25,5	14,0	13,5	0,150					
3/8"	24,5	25,5	17,5	11,0	0,140					
1/2"	28,5	33,5	21,7	12,5	0,300	33,5	38,0	21,7	14,5	0,530
3/4"	33,5	38,0	27,1	14,5	0,380	38,0	46,0	27,1	16,0	0,880
1"	38,0	46,0	33,8	16,0	0,610	44,5	55,5	33,8	17,5	1,440
1.1/4"	44,5	55,5	42,6	17,5	0,930	51,0	62,0	42,6	19,0	1,790
1.1/2"	51,0	62,0	48,7	19,0	1,240	60,5	75,5	48,7	22,0	3,240
2"	60,5	75,5	61,1	22,0	1,910	63,5	84,0	61,1	22,0	3,510
2.1/2"	76,0	92,0	73,8	34,5	3,700	86,0	110,0	73,8	30,0	8,800
3"	86,0	110,0	89,8	29,0	5,500	95,5	120,5	89,8	32,0	10,500
4"	114,5	152,5	115,4	48,0	19,000	114,5	152,5	115,4	35,0	22,200



TUERCA UNIÓN 3000LBS SW

DN	3000LBS				
	A min	B Ø min	D Ø	E	Peso aprox.
1/4"	44.5	22.0	14.0	9.5	0.230
3/8"	47.5	25.5	17.5	11.0	0.340
1/2"	54.0	32.0	21.7	12.5	0.390
3/4"	58.5	38.0	27.1	14.5	0.480
1"	63.5	44.5	33.8	16.0	0.660
1.1/4"	71.5	57.0	42.6	17.5	1.150
1.1/2"	79.5	63.5	48.7	19.0	1.420
2"	92.0	76.0	61.1	22.0	2.450



FORGED FITTINGS

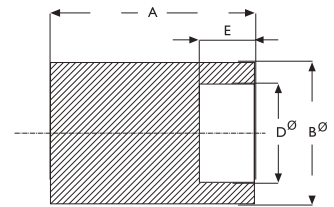
CAP SW 3000LBS A105



CAP 90° SW		Rating: 3000LBS
Especificaciones		
Material	Acero carbono ASTM A105	
Normativa	NACE MR 0175	

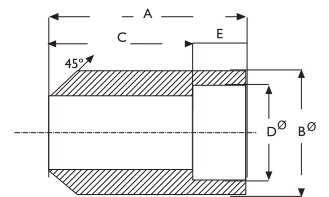
CAPS 3000LBS / 6000LBS SW

DN	3000LBS					6000LBS				
	A	B Ø	D Ø	E	Peso aprox.	A	B Ø	D Ø	E	Peso aprox.
1/4"	17,5	22,0	14,0	9,5	4,100					
3/8"	19,0	25,5	17,5	11,0	5,400					
1/2"	22,0	31,5	21,7	12,5	10,000	25,5	38,0	21,7	12,5	19,100
3/4"	25,5	38,0	27,1	14,5	16,300	27,0	44,5	27,1	14,5	26,500
1"	27,0	44,5	33,8	16,0	21,800	32,0	57,0	33,8	16,0	52,700
1.1/4"	30,0	57,0	42,6	17,5	41,300	33,5	63,5	42,6	17,5	63,600
1.1/2"	32,0	63,5	48,7	19,0	50,800	35,0	76,0	48,7	19,0	97,200
2"	38,0	76,0	61,1	22,0	85,400	41,5	92,0	61,1	22,0	164,300
2.1/2"	38,0	92,0	73,8	23,5	125,000	41,5	108,0	73,8	23,5	223,000
3"	44,5	108,0	89,8	25,5	195,000	47,5	127,0	89,8	25,5	345,000
4"	47,5	140,0	115,4	28,5	336,000	54,0	159,0	115,4	28,5	460,400



BOSSES 3000LBS SW

DN	3000LBS					
	A min	B Ø min	C	D Ø	E	Peso aprox.
1/4"	41,5	32,0	32,0	14,0	9,5	0,230
3/8"	44,5	35,0	33,5	17,5	11,0	0,290
1/2"	51,0	38,0	38,0	21,7	12,5	0,360
3/4"	51,0	44,5	36,5	27,1	14,5	0,480
1"	51,0	57,0	35,0	33,8	16,0	0,770
1.1/4"	51,0	63,5	33,5	42,6	17,5	0,840
1.1/2"	51,0	76,0	32,0	48,7	19,0	1,210
2"	51,0	92,0	28,5	61,1	22,0	1,710



FORGED FITTINGS

INSERTO REDUCIDO SW 3000LBS A105

INSERTO REDUCIDO SW A105		Rating: 3000LBS
Especificaciones		
Material	Acero carbono ASTM A105	
Normativa	NACE MR 0175	

INSERTO REDUCIDO 3000LBS SW

DN	3000LBS				
	Tipo	M ¹	N ¹	K ¹	L ¹
1/2" x 3/8"	1	21.60	11.00	24.00	20.00
1/2" x 1/4"	2	21.60	7.50	15.50	-
3/4" x 1/2"	1	26.90	14.00	27.00	22.00
3/4" x 3/8"	2	26.90	11.00	15.50	-
1" x 3/4"	1	33.60	19.00	28.50	23.00
1" x 1/2"	2	33.60	14.00	24.00	-
1.1/4" x 1"	1	42.40	24.50	31.50	24.50
1.1/4" x 3/4"	2	42.40	19.00	22.00	-
1.1/2" x 1.1/4"	1	48.50	32.50	33.50	27.00
1.1/2" x 1"	2	48.50	24.50	33.50	-
2" x 1.1/2"	2	60.90	38.00	27.00	-
2.1/2" x 2"	1	73.60	49.00	41.50	30.00

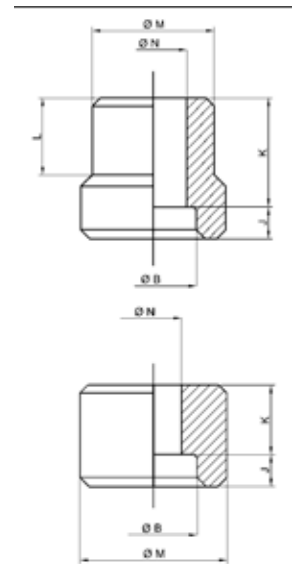
¹ Dimensiones no listadas en ASME B16.11. Pueden variar de acuerdo con el fabricante

INSERTO REDUCIDO 6000LBS SW

DN	6000LBS				
	Tipo	M ¹	N ¹	K ¹	L ¹
1/2" x 3/8"	1	21.60	11.00	30.00	21.00
3/4" x 1/2"	1	26.90	12.00	33.50	23.00
3/4" x 3/8"	2	26.90	11.00	25.50	-
1" x 3/4"	1	33.60	15.50	42.00	26.00
1" x 1/2"	1	33.60	12.00	40.00	24.00
1.1/4" x 1"	1	42.40	20.50	43.00	28.00
1.1/4" x 3/4"	1	42.40	15.50	43.00	28.00
1.1/4" x 1/2"	2	42.40	12.00	32.00	-
1.1/2" x 1.1/4"	1	48.50	29.50	51.00	32.00
1.1/2" x 1"	1	48.50	20.50	49.00	28.00
1.1/2" x 3/4"	2	48.50	15.50	35.00	-
2" x 1.1/2"	1	60.90	34.00	46.00	34.00
2" x 1.1/4"	1	60.90	29.50	47.50	34.00
2.1/2" x 2"	1	73.60	43.00	54.00	36.00
2.1/2" x 1.1/2"	2	73.60	34.00	47.50	-
3" x 2.1/2"	1	89.60	54.00	63.50	38.00
3" x 2"	2	89.60	43.00	54.00	-

¹ Dimensiones no listadas en ASME B16.11. Pueden variar de acuerdo con el fabricante

Tipo 1



Tipo 2